

# Madison County Head Start Annual Report



## September 2010

### Special points of interest:

- Funded enrollment 189.
- Total enrollment 211.
- Three program options:
  - Center-Based
  - Combination
  - Child Care Partnership
- Five centers & 2 partnership sites all locations licensed by New York State Office of Children and Family Services.
- 192 families served during the program year.



## Teaching Children, Reaching Families

Madison County Head Start is a comprehensive child development program for pre-school children age three to five and their families. The program has a long tradition of delivering comprehensive and high quality services designed to foster healthy development in low-income children.

Madison County Head Start provides a range of individualized services in the areas of education and early childhood development; medical, dental and mental health, nutrition; family services and parent involvement. In addition, the entire range of Head Start services is responsive and appropriate to each child and family's developmental, ethnic, cultural, and linguistic heritage and experience. Madison County Head Start serves 189 children in 5 centers and 2 child care partnership sites located throughout the county.

This report is prepared to comply with the  
Head Start Reauthorization Act of 2007.

### Inside this report

<b>Health Services</b>	2
<b>Family Services</b>	2
<b>Parent Involvement</b>	3
<b>Transitions</b>	4
<b>Mission Statement</b>	4
<b>External Reviews</b>	4
<b>Budget</b>	5
<b>Enrollment</b>	5
<b>Disabilities</b>	6
<b>Early Childhood Education</b>	7
<b>Cornell Cooperative Extension</b>	8

## Health Services

Head Start emphasizes the importance of the early identification of health problems. Preventative health services are central to Head Start’s comprehensive approach. All children receive developmental, behavioral, vision and hearing screenings. Early identification of health related needs ensure that each child receives medical, dental, mental health and nutritional care.



### Head Start Children received the following:

- 207 children (98%) received a physical exam prior to entering the program.
- 167 children (79%) were up-to-date on a schedule of age appropriate preventive and primary health care.
- 165 children (78%) received dental exams since the 2009 PIR was reported.
- 144 children (68%) received preventative dental care.
- 54 children (32%) needed dental treatment.
- 30 children (56%) received or are receiving dental treatment.
- 207 children (98%) are up-to-date on immunizations.
- Child receive nutritious lunches and Breakfast or Snacks during class time.

## Family Services

Specific services are geared to each family after their needs and strengths are determined. They include: community outreach, referrals, family needs and strengths assessments, recruitment and enrollment of children, and emergency assistance and/or crisis intervention. Parents work on goals they have set for themselves and their families.

**124  
Families  
received  
at least  
one service.**

### Head Start Families received the following:

Emergency/Crisis Intervention.....	2
Housing Assistance .....	15
Mental Health.....	17
English as a Second Language.....	0
Adult Education.....	19
Job Training .....	8
Substance Abuse Prevention/Treatment.....	2
Child Abuse and Neglect .....	25
Domestic Violence .....	2
Child Support Assistance.....	1
Health Education .....	55
Assist. to Families of Incarcerated Individuals.....	1
Parenting Education .....	42
Marriage Education.....	0

***“I loved Head Start!  
We have achieved all of our goals.  
Tanya was great”  
Morrisville Parent***

## Parent Involvement

Parents are recognized as their child's first and most important teacher, so an essential part of Head Start is the involvement of parents in all aspects of the program, from volunteering in the classroom to sharing decisions that shape the program by serving on Policy

Council. Parents participate in workshops on child development and discipline, nutrition and healthy lifestyles and other topics designed to meet the needs of families.

Some opportunities for parent involvement include:

- Just You and Me Day

- Parent-Teacher Conferences
- Farm to Preschool
- Parent Meetings
- Home Visits
- Completing the DECA survey
- Policy Council
- Classroom Volunteer
- Extreme Meal Makeover



### Why Be Involved?

Research reveals many benefits when parents are involved in their child's education, including:

- Higher grades and test scores;
- Better attitudes and behavior;
- Better school attendance;
- More homework completed;
- Less chance of placement in special education;



- Greater likelihood of graduating from high school; and
- Better chance of enrolling in postsecondary education.

Showing an interest in your child's education, setting high expectations for achievement and letting your child know you believe in his or her abilities sets a positive context for growth and achievement.

## Transition to Prekindergarten or Kindergarten

Our Head Start program addresses the importance of promoting effective transition from our centers to the school's kindergarten or pre-kindergarten program. Head Start has Memorandums of Understanding with some of the local schools that outlines the transition procedures. The agreements support children transitioning from Head Start to their school's kindergarten or pre-

kindergarten program. Our program will continue to connect to local schools and develop agreements with all of them.

Transition Activities include:

- Meeting with school staff
  - Transition workshops for parents
  - Cafeteria Day at the Head Start Center
  - Visiting the local schools
  - Sharing resources
- With parental permission, sharing information with the school
  - Training on New York State Standards
  - Aligning with the local school's curriculum
  - Implementing Handwriting Without Tears



### *Mission Statement*

*Madison County Head Start seeks to empower families by providing parenting and life skills, early intervention services and a variety of learning experiences which will promote family independence, enhance self-esteem and strengthen families to become more self-sufficient.*

## External Reviews

### **Federal Review:**

The most recent federal triennial review of the Head Start program was completed in March 2008 with a follow-up review held in December 2008.

All review findings were found in compliance as of December 2008.

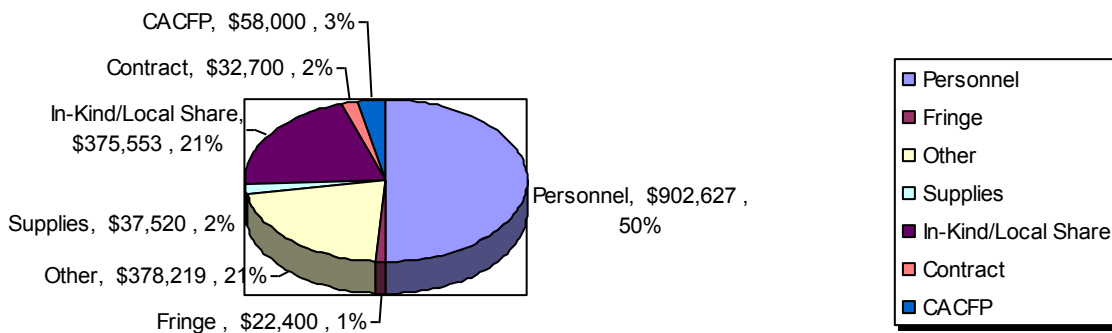
### **Independent Audit:**

In addition to regular ongoing monitoring and self assessment of our own program, we have an independent audit firm review our compliance with federal requirements and regulations. The most recent external audit was for the period

which ended on December 31, 2009.

This audit contained no material findings. A complete copy of the audit is available by request from the administrative office in Morrisville.

# 2009—2010 Approved Budget



<b>Personnel</b> - Salaries for Staff	\$ 906,627
<b>Fringe Benefits</b> - Workmen’s Compensation, Unemployment Insurance	\$ 22,400
<b>Supplies</b> - Office and Program Supplies	\$ 37,520
<b>Contractual</b> - Association Fee, CCE Services, Partnership Contracts	\$ 32,700
<b>Other</b> - Rent, Utilities, Insurance, Training, Telephones, Mileage, Food, Audit	\$ 378,219
<b>In-kind /Local Share</b> - Volunteer Services, Donated Space, Fringe Benefits	\$ 375,553
<b>CACFP</b> - (Child and Adult Care Food Program), Reimbursement for meals	\$ 58,000
<b>COLA</b> — Cost Of Living Allowance (Permanent)	\$ 43,618
<b>ARRA</b> —Quality Improvement & COLA (Temporary)	\$ 52,276
<b>Total</b>	<b>\$ 1,906,913</b>

## 2009 - 2010 Enrollment

ENROLLMENT	SEPT.	OCT.	NOV.	DEC.	JAN.	FEB.	MAR.	APR.	MAY	JUNE	JULY	AUG
<b>Classes</b>												
Canastota Center Base 1	18	18	18	18	18	16**	18	18	18	18		
Canastota Center Base 2	16	16	16	16	16	16	16	16	16	16		
Chittenango Center Base	18	18	18	18	18	18	18	18	18	18		
Morrisville Center Base	17	17	17	17	17	17	17	17	17	17		
Oneida Center Base 1	18	18	18	18	18	18	18	18	18	18		
Oneida Center Base 2	16	16	16	16	16	16	16	16	16	16		
Canastota Combination	15	15	15	15	14*	15	15	15	15	15		
Chittenango Combination	13*	15	15	14*	15	15	15	15	15	15		
Madison Combination	14*	15	14*	14*	15	15	15	15	15	15		
New Woodstock	14*	15	15	15	15	15	15	15	14**	14**		
Oneida Combination	15	15	15	15	15	15	15	15	14**	14**		
Celebrations Partnership	4	4	4	4	4	4	4	4	4	4	4	4
OADCC Partnership	6*	6*	7	7	7	7	7	7	7	6*	7	7
<b>End of Month</b>	<b>189</b>	<b>188</b>	<b>188</b>	<b>187</b>	<b>189</b>	<b>188</b>	<b>187</b>	<b>189</b>	<b>186</b>	<b>186</b>	<b>11</b>	<b>11</b>
* within 30 days	<b>189</b>	<b>189</b>	<b>189</b>	<b>189</b>	<b>189</b>	<b>189</b>	<b>189</b>	<b>189</b>	<b>188**</b>	<b>186**</b>	<b>11</b>	<b>11</b>
** within 60 days of end of year												
Over Income Children	7	7	7	7	7	7	7	7	7	7	2	2
										<b>189</b>		
										<b>211</b>		

## Disabilities Services

Ten percent of children enrolled in Head Start must be children with a diagnosed disability. Madison County Head Start children with disabilities receive itinerant services in an inclusive setting. Therapists work with children in the areas of speech and language, occupational and physical therapy, and special education.



In 2009—2010, 34 children were diagnosed as a pre-schooler with a disability. Twenty-two children were diagnosed prior to the current program year and 12 were identified after enrolment for this year. All children are diagnosed as a preschooler with a disability, but receive specific services as required by their IEP—Individualized Education Program.

*“Miss Lisa was a huge help for us with our first school experience. She also helped us with getting speech therapy started.”*

### *A Child's Success Story*

*When a child who came from a domestic violence situation started the year with us, he would not talk in class and barely said a word on home visits. By the third visit when I brought finger paint, his eyes lit up and he said paint and talked the rest of the visit. He had many articulation errors but mom was not willing to have him evaluated. I began asking lots of open ended questions on the visits and the child continued to answer and expanded on his answers. He still was not talking in class. We paired him up with a volunteer and he began talking to the volunteer in the classroom. He still was not talking in front of his peers in class but had a blanket at home that he carried around. I talked to Mom about sending the blanket. The first day he brought his blanket, while sitting with her volunteer friend, he asked another child in the dramatic play center for a piece. Soon his volunteer friend stopped coming to center and he lost his blanket right afterwards. He was able to continue to talk to his friends during free play. On the next to last week of school he raised his hand at circle time and spoke in front of his peers without the support of his blanket or his volunteer friend.*

## Early Childhood Education Services

Madison County Head Start uses the “The Creative Curriculum For Early Childhood” by Diane Trister Dodge and Laura J. Colker as the basis of our curriculum.

The basic philosophy of this curriculum is the importance of providing a variety of hands-on opportunities for children to “discover” facts about the world around them.

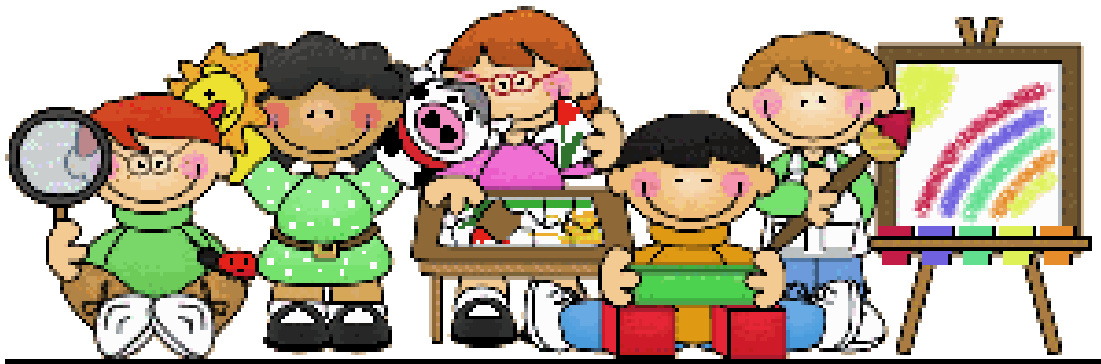
Children learn best by doing and participating in the discovery rather than listening to someone describe the

event without saying anything meaningful to which the child can relate.

Our goal is to help children become independent, self-confident, inquisitive learners. We are teaching them HOW to learn, not just in preschool, but all through their lives. We are allowing them to learn at their own pace and in the ways that are best for them. We are giving them good habits and attitudes, particularly a positive sense of themselves, which will make a difference throughout their lives.

We want each child’s first school experience to be a happy one. Activities will be created with an emphasis on helping children to:

- Get along with each other.
- Grow in confidence and independence.
- Be sensitive to the rights of others
- Develop a sense of Responsibility
- Develop an enthusiasm towards learning



*“My child had a hard time at first,  
but Miss Kathy made her feel comfortable  
and she loves Head Start”  
Oneida Combination Parent*

## Madison County Head Start

PO Box 1209  
100 Eaton Street  
Morrisville, New York 13408

Phone: 315-684-3001

Fax: 315-684-9004

[www.madisoncountycce.org](http://www.madisoncountycce.org)

## Head Start Act Requirements

This report is prepared to comply with the Head Start Reauthorization Act of 2007.

This act states that:

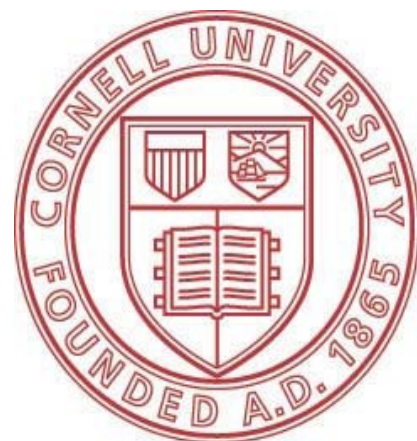
Each Head Start agency shall make available to the public a report published at least once in each fiscal year that discloses the following information from the most recently concluded fiscal year, except that reporting such information shall not reveal personally identifiable information about an individual child or parent:

- (A) The total amount of public and private funds received and the amount from each source.
- (B) An explanation of budgetary expenditures and proposed budget for the fiscal year.
- (C) The total number of children and families served, the average monthly enrollment (as a percentage of funded enrollment), and the percentage of eligible children served.
- (D) The results of the most recent review by the Secretary and the financial audit.
- (E) The percentage of enrolled children that received medical and dental exams.
- (F) Information about parent involvement activities.
- (G) The agency's efforts to prepare children for kindergarten.

## Cornell Cooperative Extension of Madison County

Cornell Cooperative Extension of Madison County is the grantee for our Head Start program.

Cooperative Extension is a nationwide system of educational programs that are jointly funded by federal, state and county governments. The U. S. Department of Agriculture is the federal partner while land grant universities are state partners. The passage of two laws by the U. S. Congress made this nationwide system possible. The Morrill Act passed in 1862 established the land grant universities and the Smith-Lever Act in 1914 funded the federal portion of Cooperative Extension.



**Cornell Cooperative Extension/Head Start of Madison County provides equal program and employment opportunities**